



---

# Product **BROCHURE**

2022/2023

---

# CONTENTS

---

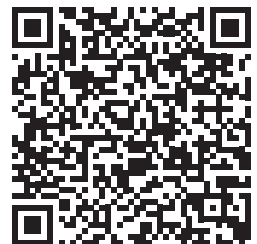
- 4** Frame Styles
- 6** Materials
- 8** Warranties
- 9** Our Process
- 10** The GWB Difference

## EASY TO FOLLOW CONSTRUCTION PLANS

Great Western makes sure that our structures are the easiest buildings available to erect. Our buildings come with two sets of simple to understand construction drawings and the most complete erection manual in the industry, as well as an itemized shipping list.

### Erection Assistance

- Erection Manual (QR Code)
- Our erection helpline is available to all customers to provide guidance and support throughout the construction process.



Erection Manual  
Download



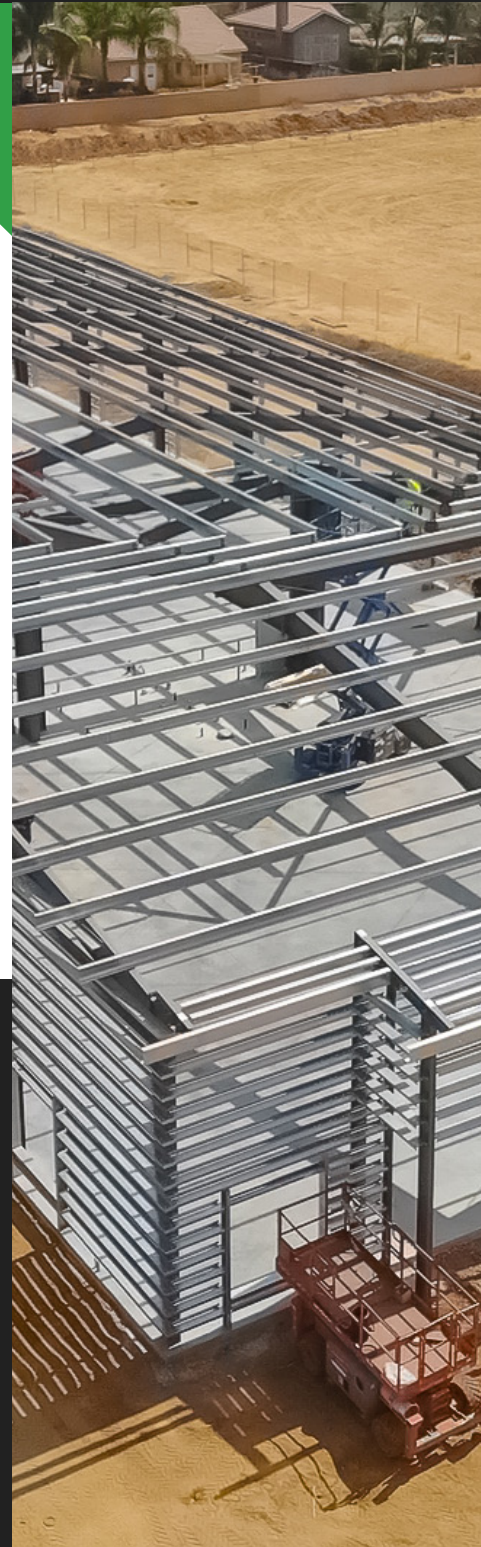
# INTRODUCTION

Great Western is comprised of dedicated professionals committed to empowering end-users and construction pros with the best pre-engineered steel buildings and steel building components available. We sell only the highest quality, 100% U.S. made buildings. We're a full service company that delivers throughout the continental United States and we supply nations that can be reached through U.S. shipping ports.

## INTEGRITY BY DESIGN

Whether you are building a 1,200 square foot back-yard workshop, a 10,000 square foot office or a 100,000 square foot industrial manufacturing facility, choosing the right company to partner with is key. We bring more than 25 years of design and manufacturing experience within the Pre-Engineered Metal Building industry.

We know you have a budget and we are committed to saving you money with our advanced design systems which offer flexibility, energy saving efficiency and speedy construction. With our price protection, there are no surprises. Our dedicated and talented staff are here to serve you, your clients and your project. We encourage you to see how our people and our commitment to "doing-it-right" can help you and your project today.



# FRAME STYLES

---

## **GABLED** Clear Span

As traditional as it gets. The gable style building has always been the standard. Offering the ability to span huge distances, this frame creates buildings that are easy to erect and great to look at.

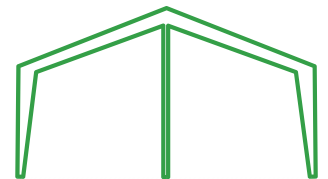
---



## **GABLED** with Interior Columns

Interior support columns can be applied to any of our frame types. If a clear interior space is not needed, the multi-span can be an effective way to reduce steel building costs on spans greater than 60'.

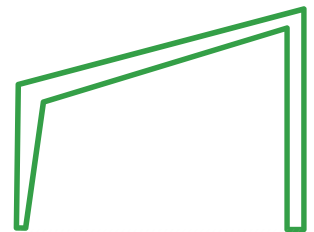
---



## **SINGLE-SLOPE**

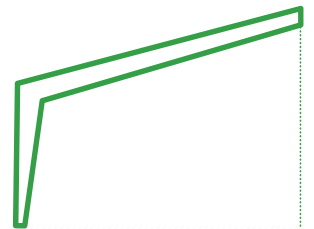
Sometimes referred to as a shed roof, the single slope is perfect for steel buildings that are attaching to existing structures and as standalone structures that need to shed water and snow to one side.

---



## **LEAN-TO**

Like the single slope, the lean-to sheds water down a single roof line. The lean-to frame is typically added as a secondary space to a new or existing steel building.



# FLEXIBLE ORDERS

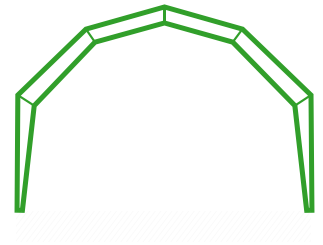
It is becoming common place for cities, counties and building authorities around the country to require engineered drawings to be submitted before a permit application will even be considered. For this reason we offer engineered drawing packages as an independent item if needed for your project. This program gives our customers all Great Western's Services without being committed to a steel order.

---

## GAMBREL

The Gambrel frame shares many of its design and engineering features with the Western style frame. For those looking for a traditional barn look, this is the framing system they choose.

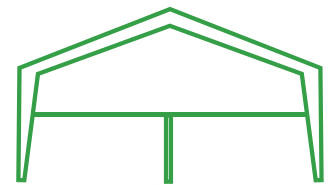
---



## MULTI-STORY

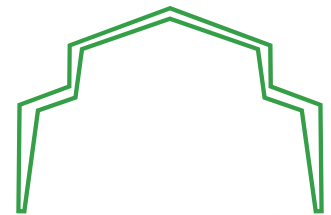
Great Western's engineering department can handle many types of mezzanine designs to create a multi-story interior.

---



## WESTERN FRAME

The "Great Western Style" as we call it is becoming more and more popular. No longer a simple gable style building with two lean-to buildings attached, the Western Style building can now cover nearly any width in a single span. This is by far the most versatile frame product in the Great Western line.



## FLEXIBLE DELIVERY

Do you need your building now and don't have time to wait? If you are ready to take delivery of your building, have a final design and do not want to spend the time working through our internal approval/permit process, we offer expedited service.

# MATERIALS

---

Great Western's strict purchasing guidelines ensure that every building has been built with only the highest quality, U.S. made materials.



## ROOF PANELS

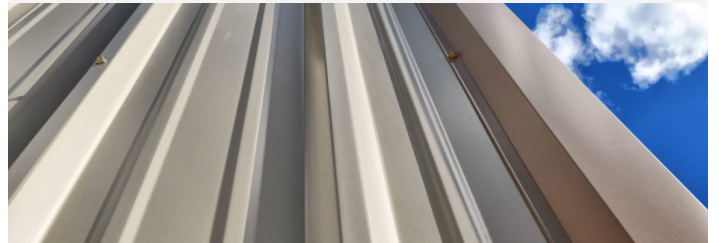


30/40 Year Rust Perf. Warranty

### Our Roof Systems:

- PBR (Purlin Bearing R)
- Panel Architectural SSR
- Trapezoidal SSR
- ENG for Non Steel

## WALL PANELS



40 Year Warranty

### Our Wall Systems:

- PBR (Purlin Bearing R) Panels
- PBA (Purlin Bearing A) Panels
- Concealed / Semi Concealed Fasteners
- 24/26 Gauge Avail.

## FRAMING SYSTEMS



Designed for Easiest Assembly

### Our Framing Systems:

- G90 Marine Grade Pre-Galvanized is Standard
- Pre-punched and Numbered Parts
- Pre-welded clips on primary and secondary framing members for simple field erection

## FASTENERS



Lifetime Rust Warranty

### Our Fasteners:

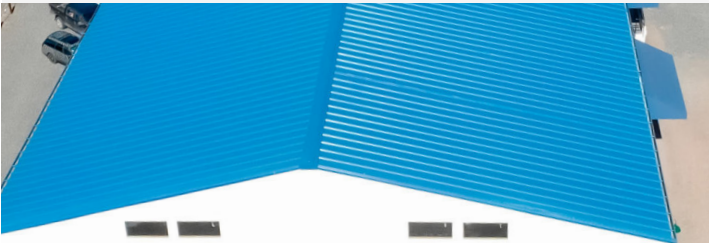
- Self Sealing Washers
- Premium Capped Head
- Self-Tapping and Drilling



# MATERIALS

- G90 Pre-Galvanized Secondaries
- Raw Material Records Maintained with Complete Traceability
- Minimum Yield and Tensile Strength Tested on all Shipments
- Full Penetration Welds at all Critical Joints

## PAINT



40 Year Paint Warranty

### **SMP and Kynar™/Florupon™:**

- Mill Baked Finishes
- Low Maintenance
- GWB Multi-Coat Process
- 10+ Available Colors

## TRIM



GWB Premium Sculptured Trim

### **Aesthetic Trim Packages:**

- Pre-Assembled Corner Boxes
- Southern & Northern Style Gutters Available
- Pre-Galv Base Trim Standard
- Complete Cover/Drip/J-Trim Frame Openings

## INSULATION



IECC Approved High R Value

### **Vinyl System & Vapor Barrier:**

- Standard MB Insulation R-7 to R-19
- Fall Protection Liner Systems
- R-Values up to R-50
- Pass All Energy Code Requirements

## COMPONENTS



Save with Our Buying Power

### **All American Accessories:**

- Garage Doors
- Windows
- Personnel Doors
- Ridge Vents and Louvers

# WARRANTIES

---



## Limited Lifetime Structural Warranty

All Great Western buildings are protected with a lifetime structural warranty. A building is an investment and it needs to be protected. We are proud to stand behind our products for a lifetime.

---

### Warranty Covers:

- General Workmanship
- Quality of Welds
- Quality of Raw Materials
- Engineering Standards

**\*\*Please see the Great Western Steel warranty document for full details\*\***



## 40 Year Limited Paint Warranty

All Great Western buildings are protected with a lifetime structural warranty. A building is an investment and it needs to be protected. We are proud to stand behind our products for a lifetime.

---

### Warranty Covers:

- Chalk and Fading
- Paint Adhesion
- Chipping, Cracking and Peeling
- Rust Perforation

**\*\*Please see the Great Western Steel warranty document for full details\*\***



# OUR PROCESS

---

**1.**

## **ESTIMATION**

We design your building and provide the total cost of materials and engineering.

**2.**

## **ORDER RECEIVED**

We provide approval drawings for your review and acceptance.

**3.**

## **ENGINEERING**

We structurally engineer the building and create stamped permit drawings

**4.**

## **FABRICATION**

Building is detailed and manufactured to it's designed specifications.

**5.**

## **DELIVERY**

We work with you to ensure a smooth unloading experience.

**6.**

## **BUILDING ERECTION**

We provide off site support, guidance and technical advice.

## **7. PROJECT COMPLETION**

Congratulations! All done! It's time to put your feet up and enjoy your new building for many years to come.

# **PLAN. DESIGN. BUILD.**

## **WE MAKE IT EASY TO BUY A QUALITY METAL BUILDING**

Our sales staff knows what it's like to make a large purchase like a Pre-Engineered Metal Building. As consumers ourselves, we make every effort to be as transparent as possible throughout the entire process.

# THE GWB DIFFERENCE

---

## WE SUPPORT YOU LONG AFTER THE SALE

It's a simple thought and an even simpler thing to say. The difficulty comes in providing it. Our people have spent years supporting do-it-yourselfers, business owners and professional contractors through completion of their buildings and beyond. We have the experience to fulfill your project's needs through permitting, design, erection and technical support.



**EXPERTLY ENGINEERED.  
EASILY ASSEMBLED.  
UNPARALLELED VALUE.**



## OUR TEAM

The Great Western Family has a long tradition of excellence, hard work and a do-it-right attitude when providing our services. Our reputation in the industry stems from not only our experience and a great portfolio but also from the people who help make our team successful.

From Engineering and Estimating to Sales and our Project Managers, it's our dedicated staff that make Great Western such a great place.

# THE GWB DIFFERENCE

---

## DESIGN

Once you've purchased your building, we immediately start on the design and engineering process. Because our engineers are in-house, we're able to reduce the time you have to wait to receive your approval drawings.



## ENGINEERING

Every Great Western building is custom designed and then fabricated to meet the unique needs of your building project. We never outsource engineering or design overseas. Every one of our projects is engineered and designed in house, and our team is always just a phone call away





**EXPERTLY ENGINEERED.  
EASILY ASSEMBLED.  
UNPARALLELED VALUE.**

